



Product Service

CERTIFICATE

No. Z1A 18 04 24133 060

Holder of Certificate: Bellelli S.R.L.

Via Meucci 232
45021 Badia Polesine RO
ITALY

Certification Mark:



Product:

Child seats for cycles

Tested according to:

EN 14344:2004
PPP 53332C:2017
AfPS GS 2014:01 PAK

The product meets the safety and health requirements of the German Product Safety Act section 20 to 22 ProdSG. The certification marks shown above can be affixed on the product. It is not permitted to alter the certification marks in any way. In addition the certificate holder must not transfer the certificate to third parties. This certificate is valid until the listed date, unless it is cancelled earlier. See also notes overleaf.

Test report no.:

028-713120309

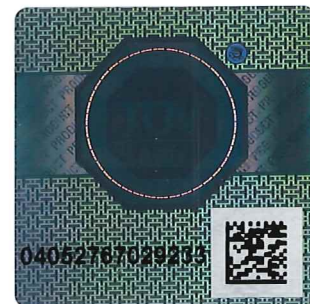
Valid until:

2023-04-03

Date, 2018-04-11

M. Schmied
(Martin Schmied)

Page 1 of 2





Product Service

CERTIFICATE

No. Z1A 18 04 24133 060

Model(s): Lotus
(Clamping systems:
Standard; Clamp)

Parameters:

| | |
|--|--|
| Total width: | 402 mm |
| Width of the seat area: | 227 mm |
| Total height: | 720 mm |
| Total depth: | 539 mm (without bracket) |
| Depth of the seat area: | 179 mm |
| Mounting position: | behind the driver |
| Classification of the seat: | A22 |
| Colour seatshell: | mustard yellow, sky blue, night black |
| Colour footrest: | grey, white |
| Colour seatpad/belt pad: | grey, white |
| Material: | PP (Shell) PE, POM, PVC, PA, LDPE (add on parts) |
| Total weight "Standard" (Frame mounting): | 1,9 kg + 1,75 kg (clamping system) |
| Total weight "Clamp" (Rack mounting): | 2,7 kg |

Factory(ies): 24133